

## Digital time and pulse counters

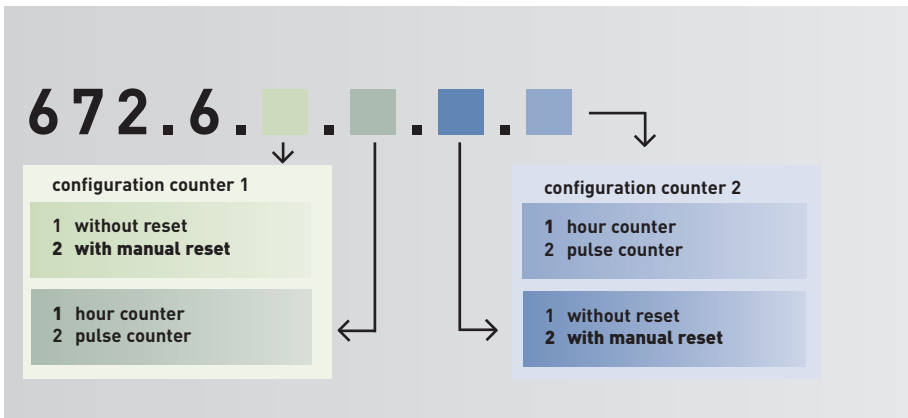
not only count, they even monitor and control.

NEW

### Digital double counter as time or pulse counters for DIN-rail mounting, multi voltage from 12-150 V DC and 24-240 V AC, with or without reset

Electronic time or pulse counters with high visibility 7-digit-LC-display. You decide, which value should be indicated by this double counter. Two times time or pulses or even one time and one pulse indication. The heart of these counters is a new ASIC-component, which has been developed by BAUSER. This component enables a voltage range of 12 to 240 VAC or DC in just one unit. The single counters are available without or with a manual reset and with common or separate input.

#### Order specifications type range 672.6.X.X.X.X

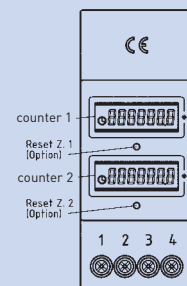
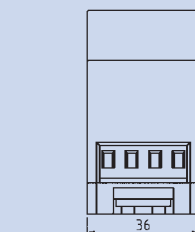
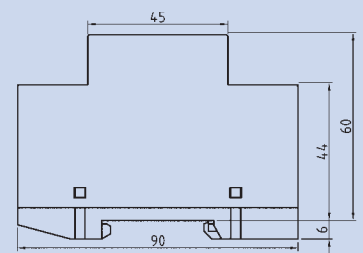


type 672.6.X.X.X.X

#### Technical specifications:

housing:	plastic light grey RAL 7035
indication:	LC-display, 7 digits (0.1h resolution for hour counter)
character height:	5 mm
operating voltage (U <sub>B</sub> ):	12 V DC - 150 V DC und 24 V AC - 240 V AC ±10% (in one unit)
frequency:	50/60 Hz
current consumption:	100 µA - 3 mA
input resistance:	approx. 120kOhm (Count, Reset)
protection (front):	IP65 (without reset button) IP40 (with reset button), screw IP20
ambient temperature:	-10° C bis +70° C
stocking temperature:	-40° C bis +80° C
electrical connection:	Terminal Blocks (lift principle) with Philips-Head-Screw (+/- screw) in combination with slotted screw with 3 mm screwdriver size, 0-2.5 mm <sup>2</sup> fine wire or 0-4 mm <sup>2</sup> single wire
max. torque:	0,5 Nm
vibration resistance:	1 g (10...500 Hz) according to EN 60068-2-34
shock resistance:	30 g (18 ms) according to EN 60068-2-27 25 g (6 ms) according to EN 60068-2-29
EMC:	EN 55011, EN 61000-6-2
industrial norm:	EN 61010, protection class II
approval:	CE
reset:	without, electrical or manual and electrical (sunk button, for example utilisable with ball point pen)
weight:	approx. 75 g
counting frequency/ pulse counter:	maximum 10Hz for AC signal voltage optionally higher counting frequency at DC-version
data storage:	EEPROM (min. 25 years)
fixing:	snap-on fixing for DIN-rail according DIN EN

#### Drawing:



#### Wiring diagram:

