

## Electromechanical pulse counters

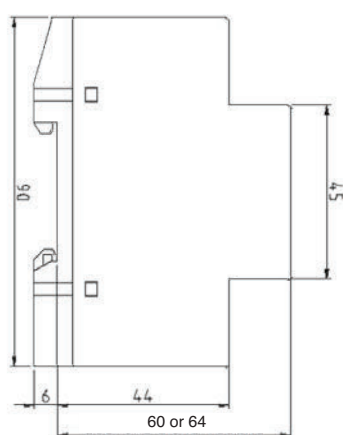


type 663.6, 663.7, 668.6, 668.7

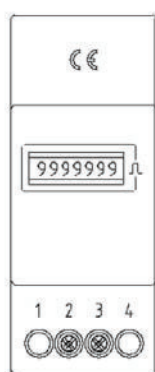
### Pulse counters for DIN rail mounting, for AC or DC, overall height 60 mm or 64 mm

Electromechanical pulse counters register quantities and therefore document production results or operating cycles. These are units for DIN-rail mounting with overall height of 60 or 64 mm.

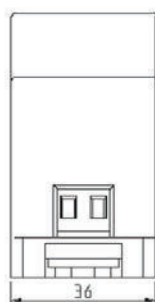
AC	DC	overall height in mm		»Lift«-terminal connection
		60	64	
663.6	668.6	■		■
663.7	668.7		■	■



drawing



type 663.6, 663.7, 668.6, 668.7



type 663.6, 663.7, 668.6, 668.7

### Technical specifications:

	AC	DC
<b>housing:</b>	plastic light grey RAL 7035	plastic light grey RAL 7035
<b>gearing:</b>	plastic	plastic
<b>counting range:</b>	9999999	9999999
<b>max. frequency:</b>	10 pulses/sec. max. duty cycle 100 %	10 pulses/sec. max. duty cycle 100 %
<b>digits:</b>	1,8 x 3,6 mm, white on black, decimals black on white	1,8 x 3,6 mm, white on black, decimals black on white
<b>voltages:</b>	115 or 230 V AC	12 - 24 V DC
<b>special voltages: (additional charge)</b>	24, 48, 400 V AC	on request
<b>voltage tolerance:</b>	±10 %	±10 %
<b>frequency:</b>	50 or 60 Hz (on request 20 to 100 Hz)	
<b>power consump.:</b>	< 2 VA	< 1 VA
<b>protection (front):</b>	IP 65, screws IP 20	IP 65, screws IP 20
<b>ambient temp.:</b>	- 10 ° C to + 70° C	- 10 ° C to + 70° C
<b>stocking temp.:</b>	- 40 ° C to + 80° C	- 40 ° C to + 80° C
<b>elec. connection:</b>	Terminal Blocks (lift principle) with Philips-Head-Screw (+/- screw) in combination with slotted screw with 3 mm screwdriver size, 0-2.5 mm <sup>2</sup> fine wire or 0-4 mm <sup>2</sup> single wire	Terminal Blocks (lift principle) with Philips-Head-Screw (+/- screw) in combination with slotted screw with 3 mm screwdriver size, 0-2.5 mm <sup>2</sup> fine wire or 0-4 mm <sup>2</sup> single wire
<b>max. torque:</b>	0,5 Nm	0,5 Nm
<b>vibration resist.:</b>	1 g (10...500 Hz) acc. to EN 60068-2-34	1 g (10...500 Hz) acc. to EN 60068-2-34
<b>shock resistance:</b>	30 g (18 ms) acc. to EN 60068-2-27 25 g (6 ms) acc. to EN 60068-2-29	30 g (18 ms) acc. to EN 60068-2-27 25 g (6 ms) acc. to EN 60068-2-29
<b>EMC:</b>	EN 55011, EN 61000-6-2	EN 55011, EN 61000-6-2
<b>industrial norm:</b>	EN 61010, protection class II	EN 61010, protection class II
<b>reset:</b>	without	without
<b>weight:</b>	approx. 75 g	approx. 75 g
<b>approval:</b>	CE, UL, cUL	CE, UL, cUL
<b>fixing:</b>	snap-on fixing for DIN-rail according to DIN EN 50022	snap-on fixing for DIN-rail according to DIN EN 50022