

Electromechanical hour counters

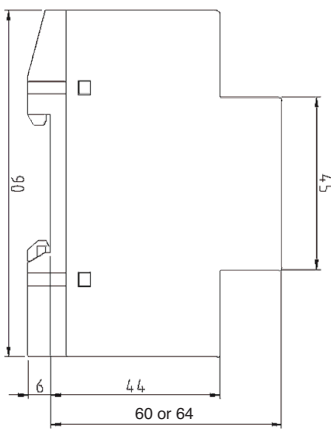


type 661.6, 661.7, 666.6, 666.7

Hour counters for DIN rail mounting, for AC or DC, overall height 60 mm or 64 mm

With its overall height of 60 or 64 mm it is an ideal counter program for DIN rail mounting. A part of these AC or DC counters are produced with two decimals and special terminals (lift principle) values in just one single housing.

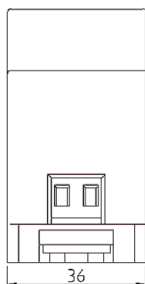
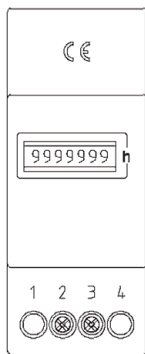
AC	DC	counting range	overall height in mm		»Lift«-terminal connection
			60	64	
661.6	666.6	99999,99 h	■		■
661.7	666.7	99999,99 h		■	■



drawing

Find pulse counter as single counter for DIN rail mounting on page 41.

Technical specifications:



	AC	DC
housing:	plastic light grey RAL 7035	plastic light grey RAL 7035
gearing:	plastic	plastic
counting range:	99999,99	99999,99
digits:	1,8 x 3,6 mm, white on black, Decimals black on white	1,8 x 3,6 mm, white on black, Decimals black on white
voltages:	115 or 230 V AC	12 - 24 V DC
special voltages: (additional charge)	12, 24, 48, 400 V AC	on request
voltage tolerance:	±10 %	±10 %
frequency:	50 or 60 Hz (on request 20 to 100 Hz)	
power consump.:	< 2 VA	< 1 VA
protection (front):	IP 65, screws IP 20	IP 65, screws IP 20
ambient temp.:	-10 °C to +70 °C	-10 °C to +70 °C
stocking temp.:	-40 °C to +80 °C	-40 °C to +80 °C
elec. connection:	Terminal Blocks (lift principle) with Philips-Head-Screw (+/- screw) in combination with slotted screw with 3 mm screwdriver size, 0-2.5 mm ² fine wire or 0-4 mm ² single wire clamp 2 and 3 (1 and 4 n. c.)	Terminal Blocks (lift principle) with Philips-Head-Screw (+/- screw) in combination with slotted screw with 3 mm screwdriver size, 0-2.5 mm ² fine wire or 0-4 mm ² single wire clamp 2 and 3 (1 and 4 n. c.)
max. torque:	0,5 Nm	0,5 Nm
vibration resist.:	1 g (10...500 Hz) acc. to EN 60068-2-34	1 g (10...500 Hz) acc. to EN 60068-2-34
shock resistance:	30 g (18 ms) acc. to EN 60068-2-27 25 g (6 ms) acc. to EN 60068-2-29	30 g (18 ms) acc. to EN 60068-2-27 25 g (6 ms) acc. to EN 60068-2-29
EMC:	EN 55011, EN 61000-6-2	EN 55011, EN 61000-6-2
industrial norm:	EN 61010, protection class II	EN 61010, protection class II
reset:	without	without
weight:	approx. 75 g	approx. 75 g
approval:	CE, UL, cUL	CE, UL, cUL
fixing:	snap-on fixing for DIN-rail according to DIN EN 50022	snap-on fixing for DIN-rail according to DIN EN 50022