



BAUSER instrument cluster
Type 806 – smart, clever, compact
and clear

Limited space in your cockpit? The casing of the all round solution has just a cutout of 52 mm, but supplies maximum 3 LEDs and a backlit LCD.

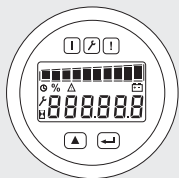
The 6 digit indication visualises for instance: Operating hours, service values and on the 10 segment bar graph you can find the information about the battery discharge level, fuel level or vehicle temperature.

Optionally with up to 2 buttons further functions can be integrated. The 3 alert lamps inform you of possible disturbances or limiting values. In the worst case can even cut any lifting operation via output.

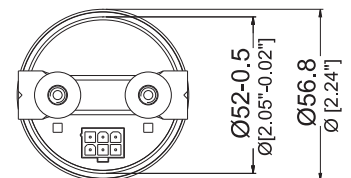
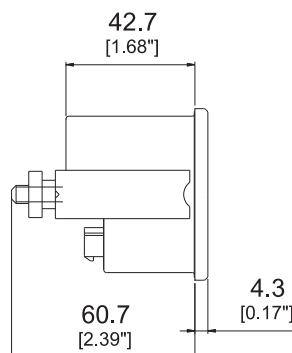
CAN | CANopen | SAE J1939
Digital and analogue sensors

806

Casing:	Material: plastic PC-ABS, colour black Front side: chemical and UV resistant polyester foil Viewing area: polycarbonate glass
LCD:	1 x 10 bar graph segments for battery discharge level 6 x 7 segment indication for the following functions: 1. Operating hours (maximum 99999,9h), 2. Service hours (maximum 9999h), 3. Battery discharge level (%), 4. Error codes
LED indication:	Maximum 3 LEDs
Inputs:	CAN Bus interface
Supply voltage:	8...28 VDC
Current consumption:	Maximum 80 mA @ 12 VDC
Ambient temperature:	-40° C...+80° C
Storage:	-40° C...+80° C
Electrical connections:	AMP-Tyco Mini-Universal-Mate-N-Lok splash proof sealed, 6 pole
Fixing:	Metal clamp with 2 screws
Protection class:	IP67 front, IP40 on the rear (optional IP65)
Vibration resistance:	EN 60068-2-64, SAE J1378
Shock resistance:	EN 60068-2-27, EN 60068-2-29, SAE J1378
EMC:	EN 12895, EN 40839-1, DIN 13309
Approval:	CE
Options:	Custom front foil Alternatively: without front foil, but with glass or plastic front cover and front bezel 1 or without LED Custom LCD indication LCD backlit Viewing area: anti-scratch treated Gore™ Membran – IP65 on the rear Connection: Molex Mini Fit Jr. Buttons for menu scrolling Buzzer FET output 1,5 A negative switching CAN, CANopen or SAE J1939 protocol UL, cUL approval Digital and analogue Inputs Battery – Indication of residual capacity



general view



suited for cutout: $\varnothing 52+0,5, [\varnothing 2.05" +0.02"]$