



## CAN | CANopen | SAE J1939 Digital and analogue sensors

# 808

### BAUSER instrument cluster Type 808 – shapely, functional, well thought out

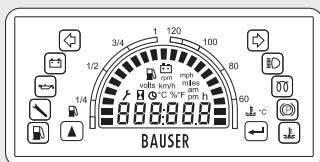
Attractive looks as well as a unique indication capability in two cutout dimensions. Characteristically: the ample, optionally backlit semicircular arch display.

According to requirements the 21 segments can be used for one single indication or even split into 2 separate indications.

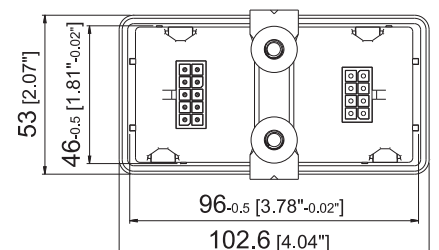
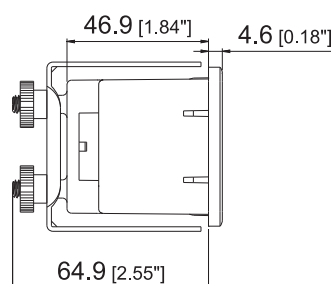
On the display there is a 6 digit 7-segment indication for operating hours, service values or the time. To add to the maximum 10 colour LEDs, which alerts you of disturbances and limit values.

On request an acoustical signal for alert and 2 front buttons can be integrated.

<b>Casing:</b>	Material: plastic PC-ABS, colour black Front side: chemical and UV resistant polyester foil Viewing area: polycarbonate glass
<b>LCD:</b>	2 x 10 segment indication for temperature and fuel level 6 x 7 segment indication for the following functions: <sup>1</sup> Speed (km/h) / (mph), <sup>2</sup> Service hours (maximum 9999h), <sup>3</sup> Operating hours (maximum 99999,9h), <sup>4</sup> Real time clock, <sup>5</sup> Voltage, <sup>6</sup> Revolutions per minute (rpm), <sup>7</sup> Temperature (° C) / (° F), <sup>8</sup> Error codes Backlit: standard: green-yellow
<b>LED indication:</b>	Maximum 10 LEDs, configurable assignment
<b>Inputs:</b>	Maximum 10 x digital inputs – selectable polarity, 1 x Count input, 2 x Resistance
<b>Supply voltage:</b>	8...36 VDC
<b>Current consumption:</b>	Maximum 230 mA @ 12 VDC
<b>Ambient temperature:</b>	-40° C...+85° C
<b>Storage:</b>	-40° C...+85° C
<b>Electrical connections:</b>	AMP-Tyco Mini-Universal-Mate-N-Lok splash proof sealed 10 pole and 8 pole
<b>Fixing:</b>	Metal clamps with 2 screws
<b>Protection class:</b>	IP67 front, IP40 on the rear (optional IP65)
<b>Vibration resistance:</b>	EN 60068-2-64, SAE J1378
<b>Shock resistance:</b>	EN 60068-2-27, EN 60068-2-29, SAE J1378
<b>EMC:</b>	EN 12895, EN 40839-1, DIN 13309
<b>Approval:</b>	CE
<b>Options:</b>	Custom front foil Custom LCD indication LCD backlit blue or white Viewing area: anti-scratch treated Gore™ Membran – IP65 on the rear Connection: Molex Mini Fit Jr. Real time clock Buttons to set the time and to scroll the menu Buzzer FET output 1,5 A negative switching CAN, CANopen or SAE J1939 protocol Fixing with 4 Snap-in clamps -> casing depth: 46,9mm UL, cUL approval Cutout dimensions: 45.00 mm x 92.00 mm [1.78 inch x 3.62 inch] Battery – Indication of residual capacity



general view



suited for cutout: 46+0,5 x 96+0,5, [1.81"+0.02" x 3.78"+0.02"]  
option: 45+0,5 x 92+0,5 mm, [1.78"+0.02" x 3.62"+0.02"]