



CAN | CANopen | SAE J1939
Digital and analogue sensors

809

BAUSER instrument cluster
Type 809 – unconventional, innovative, safe

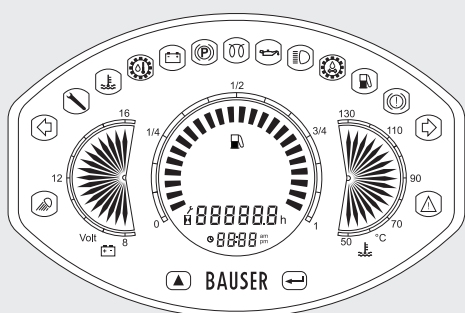
Ideal for medium and big construction machines, fork lift trucks and utility vehicles as well as for agricultural machines.

With two half-moon displays and one large circular display – amply backlit depending upon the requirements can be supplied with needle animation or with bar graph indication.

Up to 15 vehicle functions and status information can be visualised through the bright shining LEDs – readable under direct sunlight.

Particular advantage: The service values can be reset comfortably by the code protected front buttons. The front is very robust und highly protected to resist even high pressure cleaning.

Casing:	Material: plastic PC-ABS, colour black Front side: chemical and UV resistant polyester foil Viewing area: polycarbonate glass
LCD:	2 x 17 segment indication for temperature and battery voltage (alternatively bar graph) 1 x 24 bar graph segments for fuel level (alternatively needle animation) 6 x 7 segment indication for the following functions: 1. Speed (km/h) / (mph), 2. Service hours (maximum 9999h), 3. Operating hours (maximum 99999.9h), 4. Real time clock, 5. Voltage, 6. Revolutions per minute (rpm), 7. Temperature (° C) / (° F), 8. Error codes 4 x 7 segments for the Real time clock Backlit: standard: green-yellow
LED indication:	Maximum 15 LEDs, configurable assignment
Inputs:	Maximum 16 x digital inputs – selectable polarity, 2 x Count input, 3 x Resistance
Supply voltage:	8...36 VDC
Current consumption:	Maximum 450 mA @ 12 VDC
Ambient temperature:	-40° C...+85° C
Storage:	-40° C...+85° C
Electrical connections:	Tyco super seal, 26 poles
Fixing:	Two Metal clamps with 4 screws
Protection class:	IP67 front, IP40 on the rear (optional IP65)
Vibration resistance:	EN 60068-2-64, SAE J1378
Shock resistance:	EN 60068-2-27, EN 60068-2-29, SAE J1378
EMC:	EN 12895, EN 40839-1, DIN 13309
Approval:	CE
Options:	Custom front foil Custom LCD indication LCD backlit blue or white Viewing area: anti-scratch treated Gore™ Membran – IP65 on the rear Connection: Molex Minit Jr., AMP-Tyco Mini-Universal-Mate-N-Lok Real time clock Buttons to set the time and to scroll the menu Buzzer FET output 1,5 A positive switching Relay output 3,0 A CAN, CANopen or SAE J1939 protocol Fixing with 6 Snap-in clamps -> casing depth: 57,2 mm UL, cUL approval Battery – Indication of residual capacity



general view

