

813

**BAUSER Panel Type 813 –  
the top solution with supervision**

The data transmission is effected digitally, analogically or on CAN-, CANopen, SAE J1939 or other serial interface.

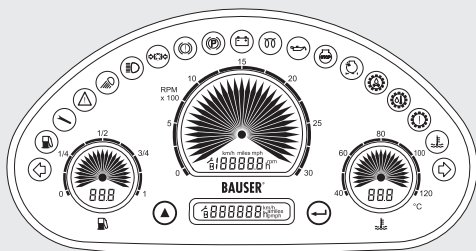
Modifications are no problem: A competent team supports your application to realization.

BAUSER is renowned for flexible and individual solutions, benefiting from decades of experience in the electronic, electrotechnical, soft- and hardware engineering sectors.

From initial concept through project development prototyping to the final production run, everything is handled under one roof.

BAUSER has high quality standards, proven by many customer audits and guarantee »just in time« shipments.

<b>housing:</b>	plastic PC-ABS, black colour front side: chemical und UV resistant polyester foil viewing side: non-reflecting glass
<b>LC-Display:</b>	<b>LCD gauge 1:</b> 23-segment needle for fuel level 3 digits 7 segment for errors (CAN version only) <b>LCD gauge 2:</b> 33-segment needle for rpm 5 1/2 digits 7 segment for km, km/h, miles, mph, rpm, hour meter, service counter <b>LCD gauge 3:</b> 23-segment needle for coolant temperature 3 digits 7 segment for errors (CAN version only) <b>LCD gauge 4 (optional):</b> 6 digits 7 segment for clock, km, km/h, miles, mph, hour meter, service counter LCD gauges 1 - 3 optionally can be realized with bar graph segments
<b>LED indication:</b>	max. 19 brightness LEDs, readable even in direct sunlight, connection configurable
<b>inputs:</b>	16x digital inputs, polarity selectable, 2x count, 3x resistance, CAN
<b>operating voltage:</b>	8 to 36 V DC (nominal 12 VDC)
<b>current consumption:</b>	max. 550 mA @ 12 V DC
<b>operating temperature:</b>	-40° C to +85° C
<b>storage temperature:</b>	-40° C to +90° C
<b>connector:</b>	Tyco Super Seal, 26 pole
<b>fixing:</b>	two metal clamps with four nuts
<b>protection class:</b>	IP67 front, IP40 rear (optional IP65)
<b>vibration resistance:</b>	EN 60068-2-64, SAE J1378
<b>shock resistance:</b>	EN 60068-2-27, EN 60068-2-29, SAE J1378
<b>EMC:</b>	EN 12895, DIN 40839-1, EN 13309
<b>approval:</b>	<b>CE</b>
<b>options:</b>	customised front foil design and LCD, LCD backlight (green-yellow or blue), CAN, CANopen or SAE J1939 protocol, Gore™ Membrane, IP65 rear, real time clock, indication of residual capacity of battery, front buttons for setting the time and for scrolling, buzzer, FET outputs 1.5 A – positive connected, relay outputs 3.0 A, Fixing with four clamps (snap-in), UL, cUL approvals



general view

